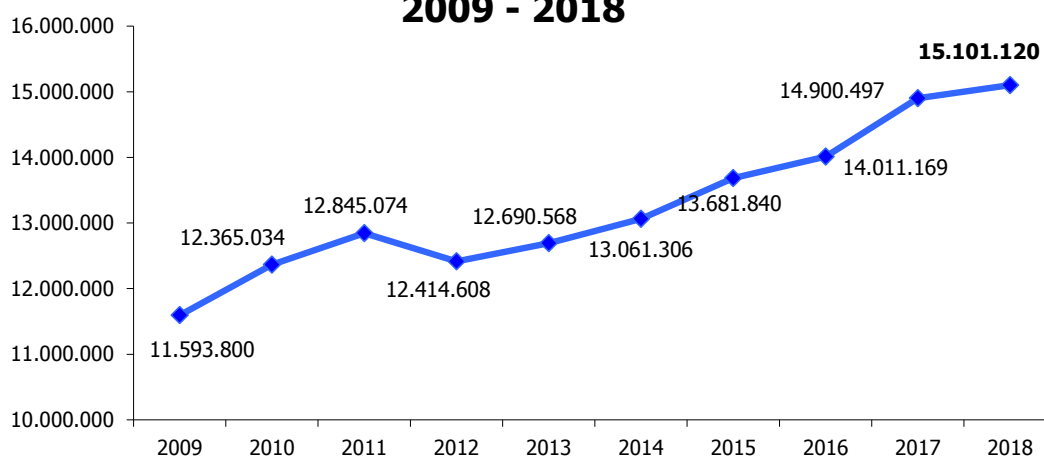
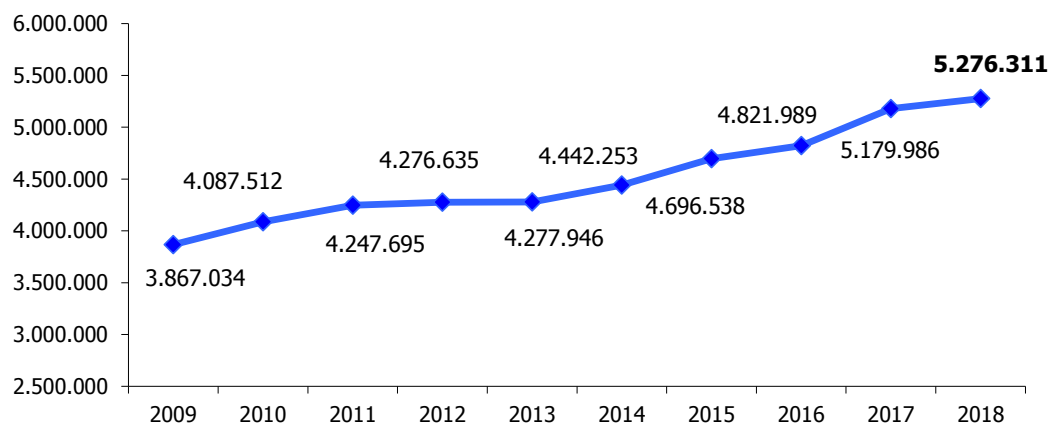


## Trend Presenze 2009 - 2018



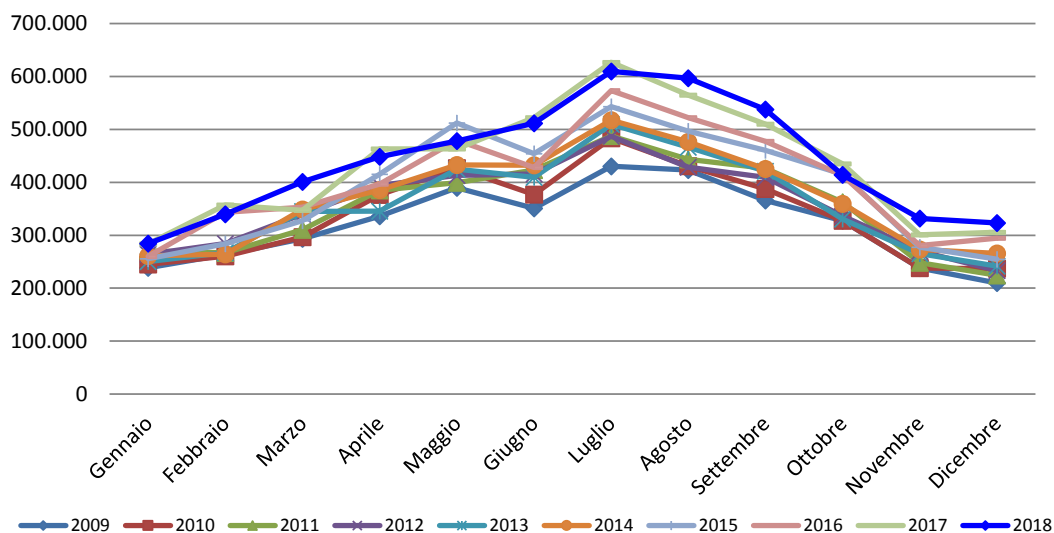
ANNO	PRESENZE	Differenza % su 2009	Differenza % su 2010	Differenza % su 2011	Differenza % su 2012	Differenza % su 2013	Differenza % su 2014	Differenza % su 2015	Differenza % su 2016	Differenza % su 2017
2009	11.593.800									
2010	12.365.034	6,65%								
2011	12.845.074	10,79%	3,88%							
2012	12.414.608	7,08%	0,40%	-3,35%						
2013	12.690.568	9,46%	2,63%	-1,20%	2,22%					
2014	13.061.306	12,66%	5,63%	1,68%	5,21%	2,92%				
2015	13.681.840	18,01%	10,65%	6,51%	10,21%	7,81%	4,75%			
2016	14.011.169	20,85%	13,31%	9,08%	12,86%	10,41%	7,27%	2,41%		
2017	14.900.497	28,52%	20,51%	16,00%	20,02%	17,41%	14,08%	8,91%	6,35%	
<b>2018</b>	<b>15.101.120</b>	<b>30,25%</b>	<b>22,13%</b>	<b>17,56%</b>	<b>21,64%</b>	<b>18,99%</b>	<b>15,62%</b>	<b>10,37%</b>	<b>7,78%</b>	<b>1,35%</b>

## Trend Arrivi 2009 - 2018

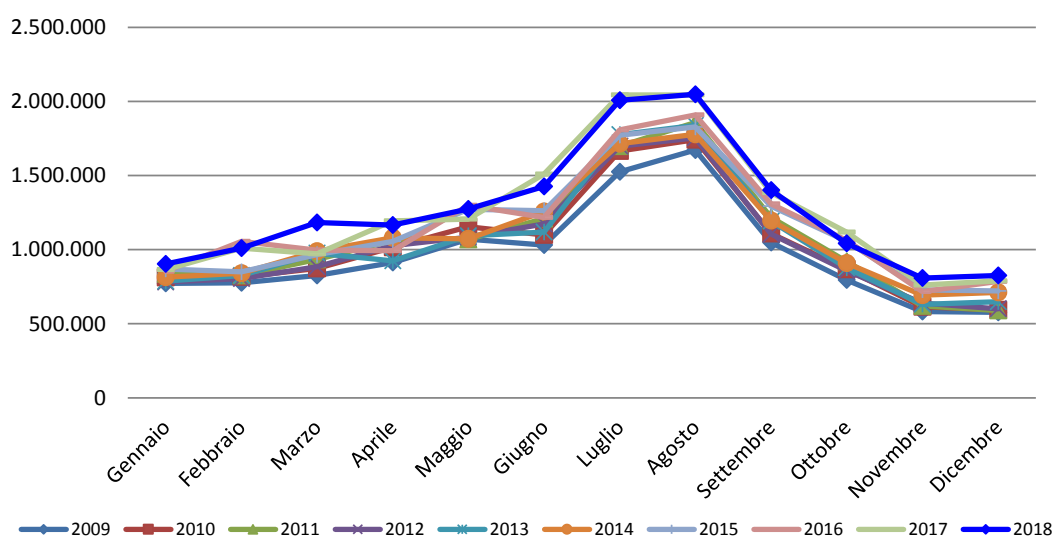


ANNO	ARRIVI	Differenza % su 2009	Differenza % su 2010	Differenza % su 2011	Differenza % su 2012	Differenza % su 2013	Differenza % su 2014	Differenza % su 2015	Differenza % su 2016	Differenza % su 2017
2009	3.867.034									
2010	4.087.512	5,70%								
2011	4.247.695	9,84%	3,92%							
2012	4.276.635	10,59%	4,63%	0,68%						
2013	4.277.946	10,63%	4,66%	0,71%	0,03%					
2014	4.442.253	14,87%	8,68%	4,58%	3,87%	3,84%				
2015	4.696.538	21,45%	14,90%	10,57%	9,82%	9,78%	5,72%			
2016	4.821.989	24,69%	17,97%	13,52%	12,75%	12,72%	8,55%	2,67%		
2017	5.179.986	33,95%	26,73%	21,95%	21,12%	21,09%	16,61%	10,29%	7,42%	
<b>2018</b>	<b>5.276.311</b>	<b>36,44%</b>	<b>29,08%</b>	<b>24,22%</b>	<b>23,38%</b>	<b>23,34%</b>	<b>18,78%</b>	<b>12,34%</b>	<b>9,42%</b>	<b>1,86%</b>

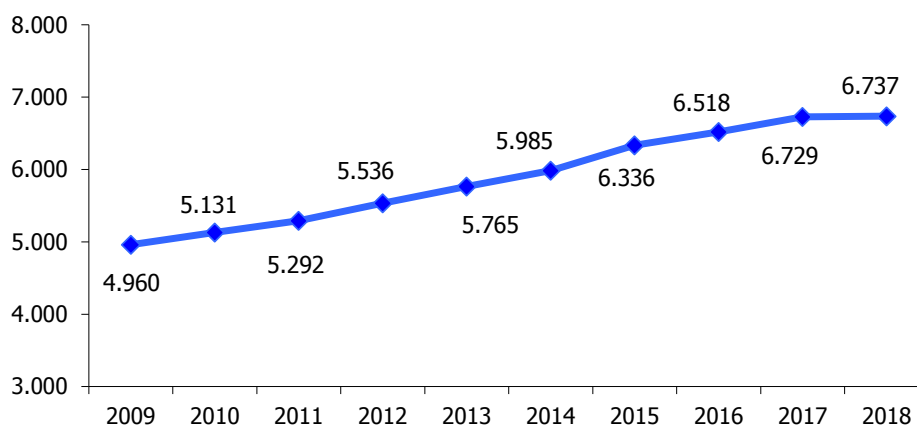
### Trend Arrivi Mensili



### Trend Presenze Mensili

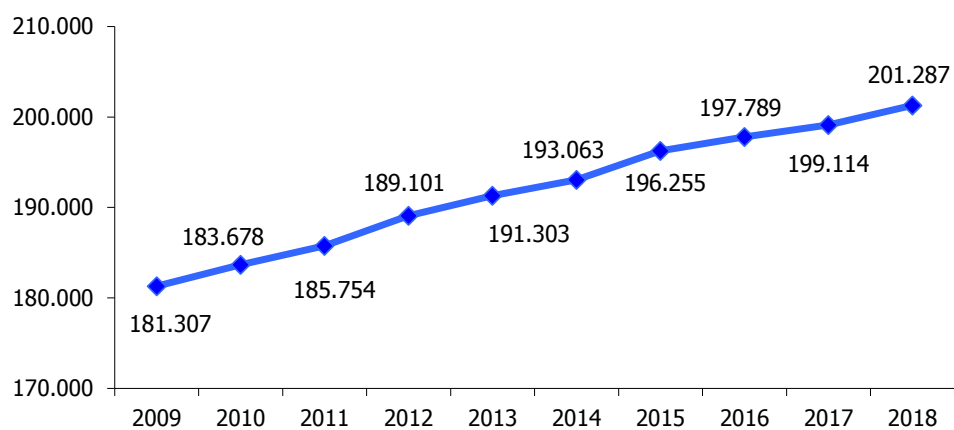


## Trend Esercizi Ricettivi 2009 - 2018



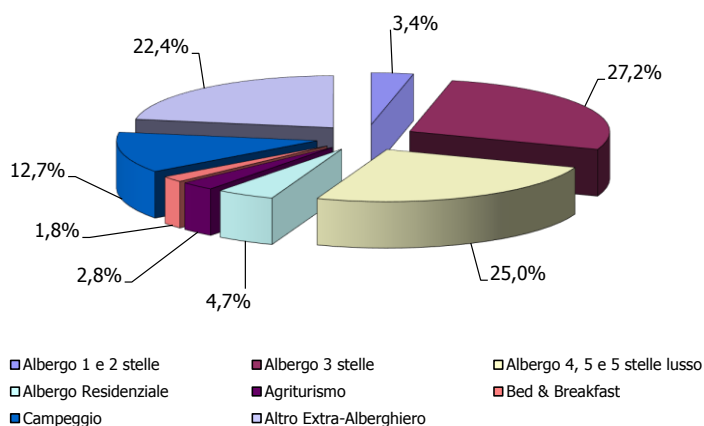
ANNO	STRUTTURE	Differenza % su 2009	Differenza % su 2010	Differenza % su 2011	Differenza % su 2012	Differenza % su 2013	Differenza % su 2014	Differenza % su 2015	Differenza % su 2016	Differenza % su 2017
2009	4.960									
2010	5.131	3,45%								
2011	5.292	6,69%	3,14%							
2012	5.536	11,61%	7,89%	4,61%						
2013	5.765	16,23%	12,36%	8,94%	4,14%					
2014	5.985	20,67%	16,64%	13,10%	8,11%	3,82%				
2015	6.336	27,74%	23,48%	19,73%	14,45%	9,90%	5,86%			
2016	6.518	31,41%	27,03%	23,17%	17,74%	13,06%	8,91%	2,87%		
2017	6.729	35,67%	31,14%	27,15%	21,55%	16,72%	12,43%	6,20%	3,24%	
<b>2018</b>	<b>6.737</b>	<b>35,83%</b>	<b>31,30%</b>	<b>27,31%</b>	<b>21,69%</b>	<b>16,86%</b>	<b>12,56%</b>	<b>6,33%</b>	<b>3,36%</b>	<b>0,12%</b>

## Trend Posti Letto 2009 - 2018



ANNO	LETTI	Differenza % su 2009	Differenza % su 2010	Differenza % su 2011	Differenza % su 2012	Differenza % su 2013	Differenza % su 2014	Differenza % su 2015	Differenza % su 2016	Differenza % su 2017
2009	181.307									
2010	183.678	1,31%								
2011	185.754	2,45%	1,13%							
2012	189.101	4,30%	2,95%	1,80%						
2013	191.303	5,51%	4,15%	2,99%	1,16%					
2014	193.063	6,48%	5,11%	3,93%	2,10%	0,92%				
2015	196.255	8,24%	6,85%	5,65%	3,78%	2,59%	1,65%			
2016	197.789	9,09%	7,68%	6,48%	4,59%	3,39%	2,45%	0,78%		
2017	199.114	9,82%	8,40%	7,19%	5,30%	4,08%	3,13%	1,46%	0,67%	
<b>2018</b>	<b>201.287</b>	<b>11,02%</b>	<b>9,59%</b>	<b>8,36%</b>	<b>6,44%</b>	<b>5,22%</b>	<b>4,26%</b>	<b>2,56%</b>	<b>1,77%</b>	<b>1,09%</b>

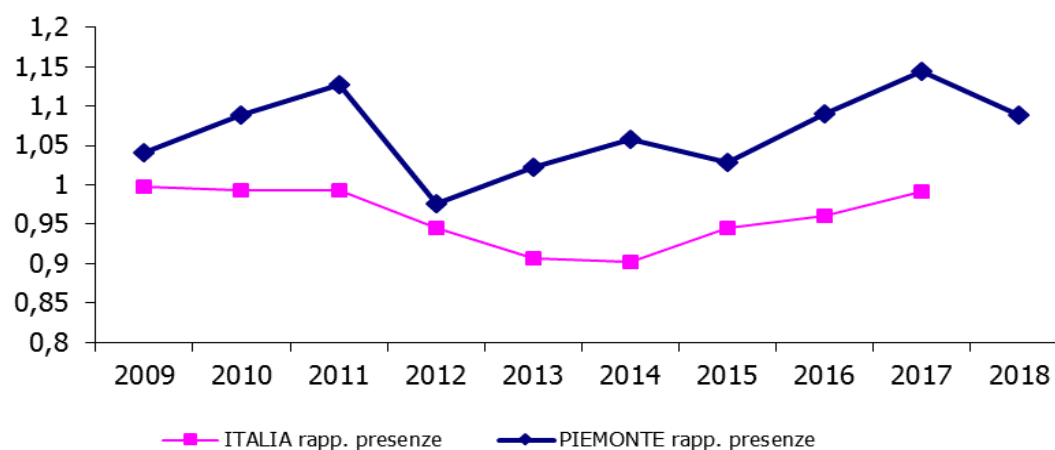
**Presenze 2018 per tipologie di strutture ricettive  
Principali Paesi di provenienza - oltre 85% del totale presenze**



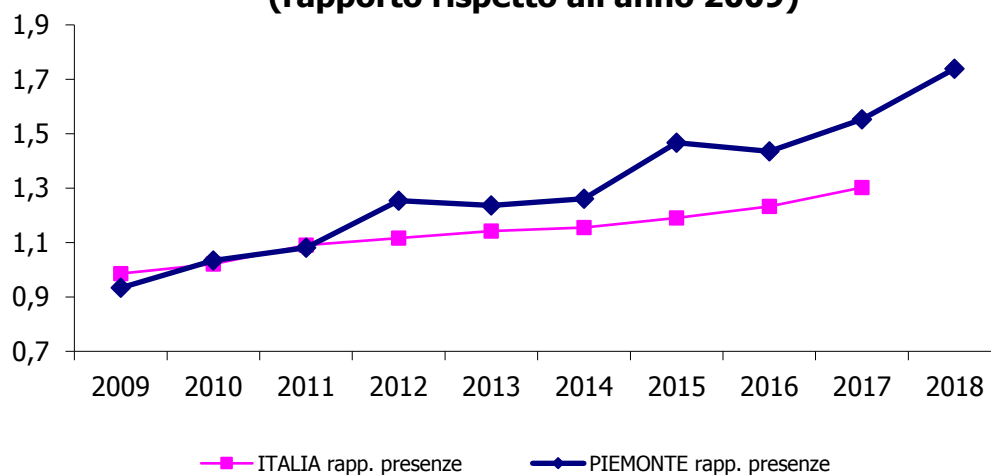
Tipologia struttura	Germania	Francia	Svizzera	Paesi Bassi	Regno Unito	USA	Belgio	Italia	TOTALE
Albergo 1 e 2 stelle	20.291	25.752	12.480	4.160	28.163	3.263	2.392	347.027	443.528
Albergo 3 stelle	294.466	213.083	109.718	58.296	176.013	30.024	32.859	2.636.614	3.551.073
Albergo 4, 5 e 5 stelle lusso	278.695	271.160	171.580	62.548	249.129	147.856	65.000	2.021.364	3.267.332
Albergo Residenziale	40.690	79.874	17.872	16.732	108.856	5.913	3.916	339.225	613.078
Agriturismo	46.382	20.745	49.167	21.620	8.641	11.510	12.597	190.110	360.772
Bed & Breakfast	30.117	21.298	16.631	10.888	5.231	4.378	5.829	145.438	239.810
Campeggio	430.941	48.374	115.966	301.956	19.381	623	22.681	716.159	1.656.081
Altro Extra-Alberghiero	308.532	113.101	143.087	183.832	42.872	28.385	29.665	2.071.573	2.921.047
<b>TOTALE</b>	<b>1.450.114</b>	<b>793.387</b>	<b>636.501</b>	<b>660.032</b>	<b>638.286</b>	<b>231.952</b>	<b>174.939</b>	<b>8.467.510</b>	<b>13.052.721</b>

## Il Piemonte rispetto al totale Italia

### Presenze turisti italiani (rapporto rispetto all'anno 2009)

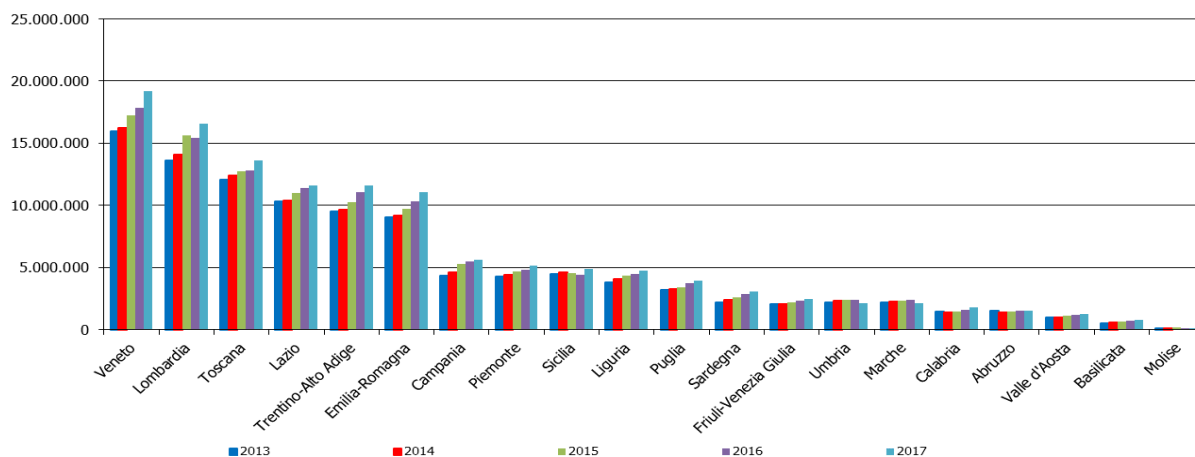


### Presenze turisti stranieri (rapporto rispetto all'anno 2009)



## Il Piemonte rispetto alle altre regioni italiane

### Arrivi



### Presenze

