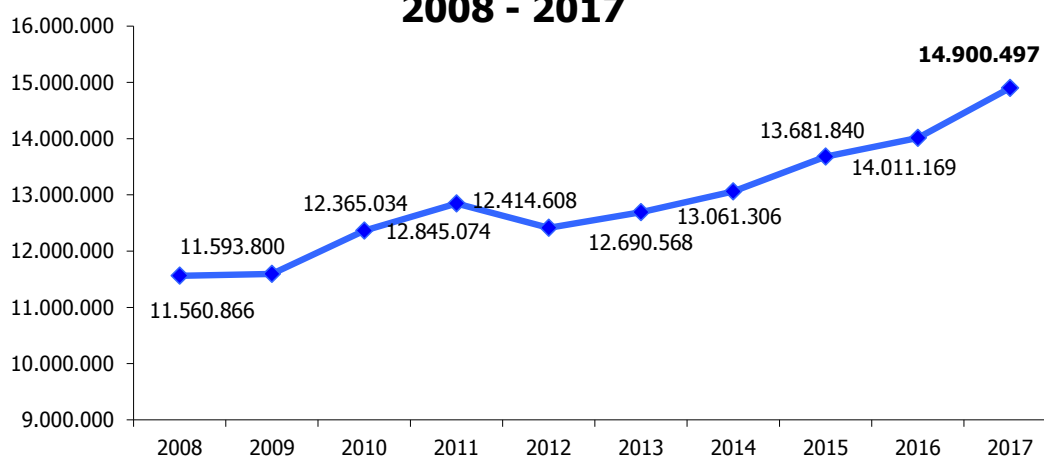
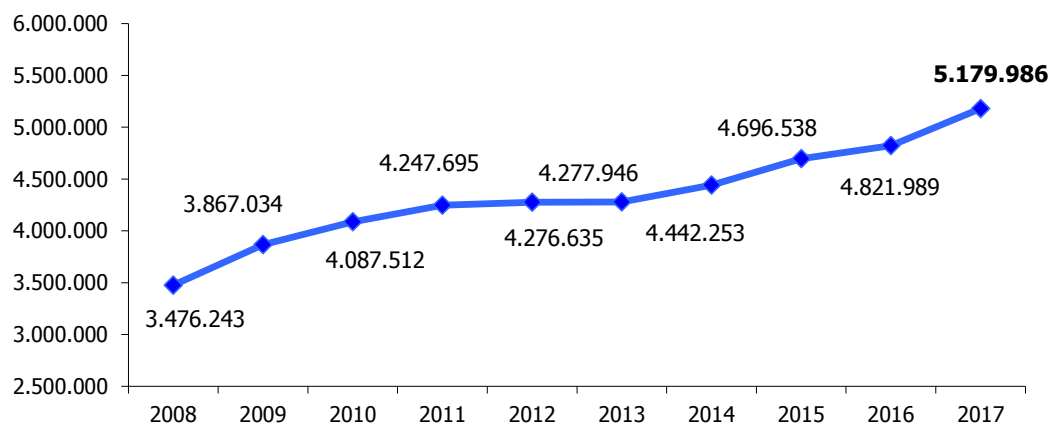


## Trend Presenze 2008 - 2017



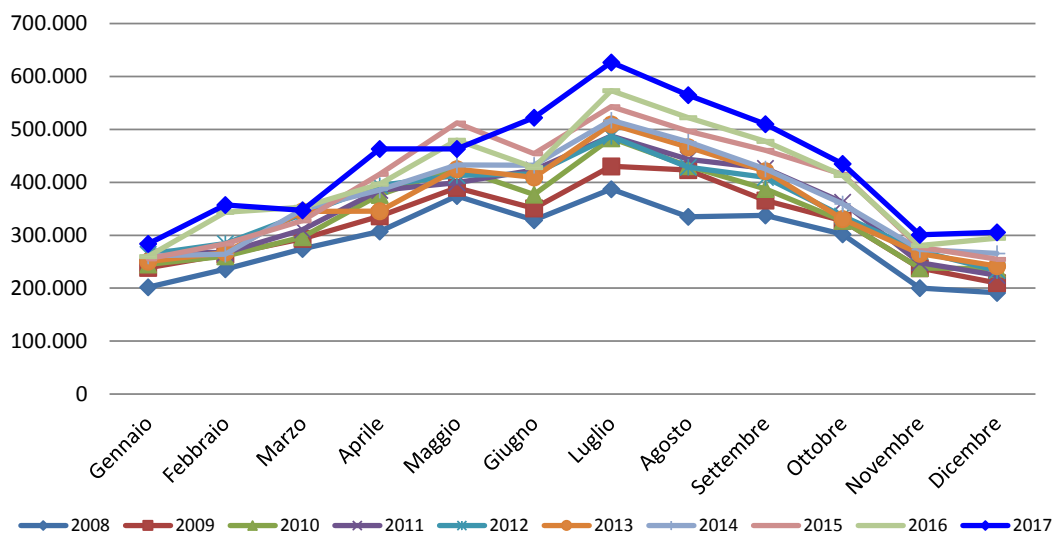
ANNO	PRESENZE	Differenza % su 2008	Differenza % su 2009	Differenza % su 2010	Differenza % su 2011	Differenza % su 2012	Differenza % su 2013	Differenza % su 2014	Differenza % su 2015	Differenza % su 2016
2008	11.560.866									
2009	11.593.800	0,28%								
2010	12.365.034	6,96%	6,65%							
2011	12.845.074	11,11%	10,79%	3,88%						
2012	12.414.608	7,38%	7,08%	0,40%	-3,35%					
2013	12.690.568	9,77%	9,46%	2,63%	-1,20%	2,22%				
2014	13.061.306	12,98%	12,66%	5,63%	1,68%	5,21%	2,92%			
2015	13.681.840	18,35%	18,01%	10,65%	6,51%	10,21%	7,81%	4,75%		
2016	14.011.169	21,19%	20,85%	13,31%	9,08%	12,86%	10,41%	7,27%	2,41%	
<b>2017</b>	<b>14.900.497</b>	<b>28,89%</b>	<b>28,52%</b>	<b>20,51%</b>	<b>16,00%</b>	<b>20,02%</b>	<b>17,41%</b>	<b>14,08%</b>	<b>8,91%</b>	<b>6,35%</b>

## Trend Arrivi 2008 - 2017

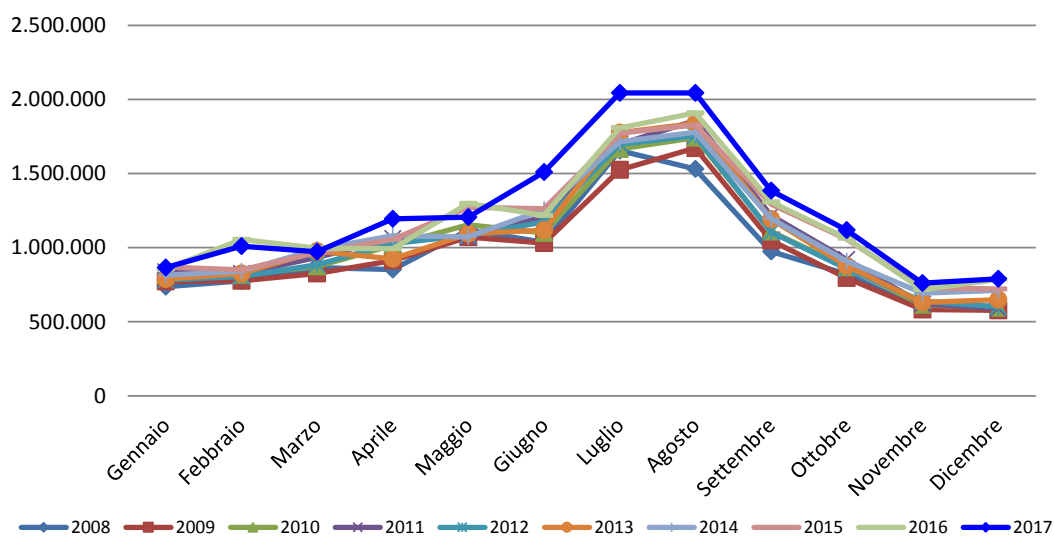


ANNO	ARRIVI	Differenza % su 2008	Differenza % su 2009	Differenza % su 2010	Differenza % su 2011	Differenza % su 2012	Differenza % su 2013	Differenza % su 2014	Differenza % su 2015	Differenza % su 2016
2008	3.476.243									
2009	3.867.034	11,24%								
2010	4.087.512	17,58%	5,70%							
2011	4.247.695	22,19%	9,84%	3,92%						
2012	4.276.635	23,02%	10,59%	4,63%	0,68%					
2013	4.277.946	23,06%	10,63%	4,66%	0,71%	0,03%				
2014	4.442.253	27,79%	14,87%	8,68%	4,58%	3,87%	3,84%			
2015	4.696.538	35,10%	21,45%	14,90%	10,57%	9,82%	9,78%	5,72%		
2016	4.821.989	38,71%	24,69%	17,97%	13,52%	12,75%	12,72%	8,55%	2,67%	
<b>2017</b>	<b>5.179.986</b>	<b>49,01%</b>	<b>33,95%</b>	<b>26,73%</b>	<b>21,95%</b>	<b>21,12%</b>	<b>21,09%</b>	<b>16,61%</b>	<b>10,29%</b>	<b>7,42%</b>

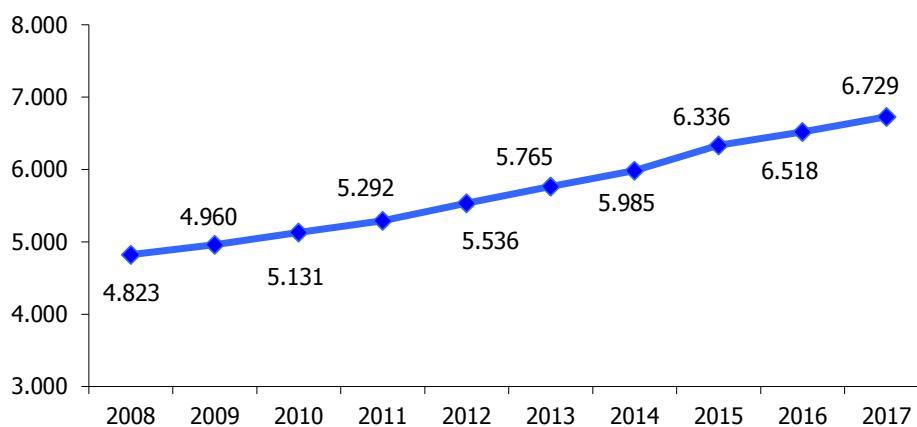
### Trend Arrivi Mensili



### Trend Presenze Mensili

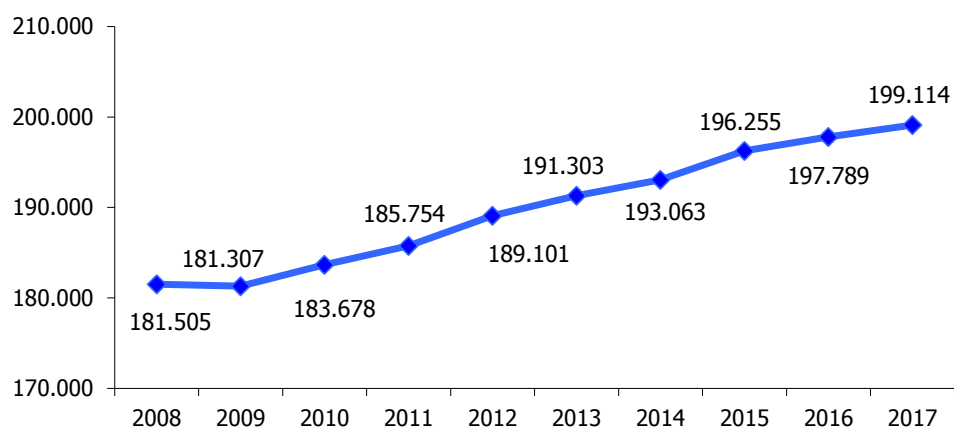


## Trend Esercizi Ricettivi 2008 - 2017



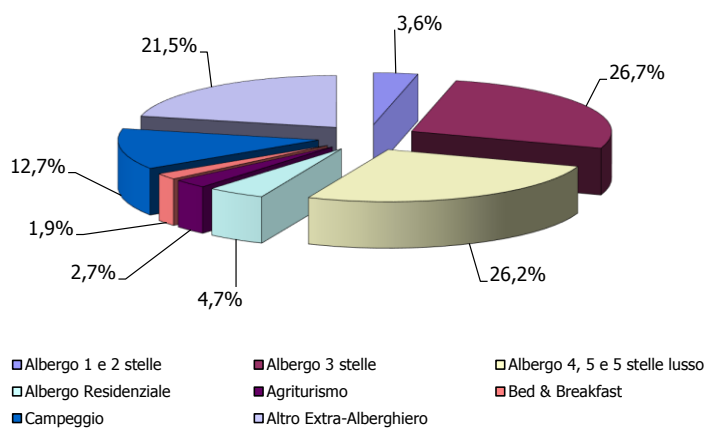
ANNO	STRUTTURE	Differenza % su 2008	Differenza % su 2009	Differenza % su 2010	Differenza % su 2011	Differenza % su 2012	Differenza % su 2013	Differenza % su 2014	Differenza % su 2015	Differenza % su 2016
2008	4.823									
2009	4.960	2,84%								
2010	5.131	6,39%	3,45%							
2011	5.292	9,72%	6,69%	3,14%						
2012	5.536	14,78%	11,61%	7,89%	4,61%					
2013	5.765	19,53%	16,23%	12,36%	8,94%	4,14%				
2014	5.985	24,09%	20,67%	16,64%	13,10%	8,11%	3,82%			
2015	6.336	31,37%	27,74%	23,48%	19,73%	14,45%	9,90%	5,86%		
2016	6.518	35,14%	31,41%	27,03%	23,17%	17,74%	13,06%	8,91%	2,87%	
<b>2017</b>	<b>6.729</b>	<b>39,52%</b>	<b>35,67%</b>	<b>31,14%</b>	<b>27,15%</b>	<b>21,55%</b>	<b>16,72%</b>	<b>12,43%</b>	<b>6,20%</b>	<b>3,24%</b>

## Trend Posti Letto 2007 - 2016



ANNO	LETTI	Differenza % su 2008	Differenza % su 2009	Differenza % su 2010	Differenza % su 2011	Differenza % su 2012	Differenza % su 2013	Differenza % su 2014	Differenza % su 2015	Differenza % su 2016
2008	181.505									
2009	181.307	-0,11%								
2010	183.678	1,20%	1,31%							
2011	185.754	2,34%	2,45%	1,13%						
2012	189.101	4,19%	4,30%	2,95%	1,80%					
2013	191.303	5,40%	5,51%	4,15%	2,99%	1,16%				
2014	193.063	6,37%	6,48%	5,11%	3,93%	2,10%	0,92%			
2015	196.255	8,13%	8,24%	6,85%	5,65%	3,78%	2,59%	1,65%		
2016	197.789	8,97%	9,09%	7,68%	6,48%	4,59%	3,39%	2,45%	0,78%	
<b>2017</b>	<b>199.114</b>	<b>9,70%</b>	<b>9,82%</b>	<b>8,40%</b>	<b>7,19%</b>	<b>5,30%</b>	<b>4,08%</b>	<b>3,13%</b>	<b>1,46%</b>	<b>0,67%</b>

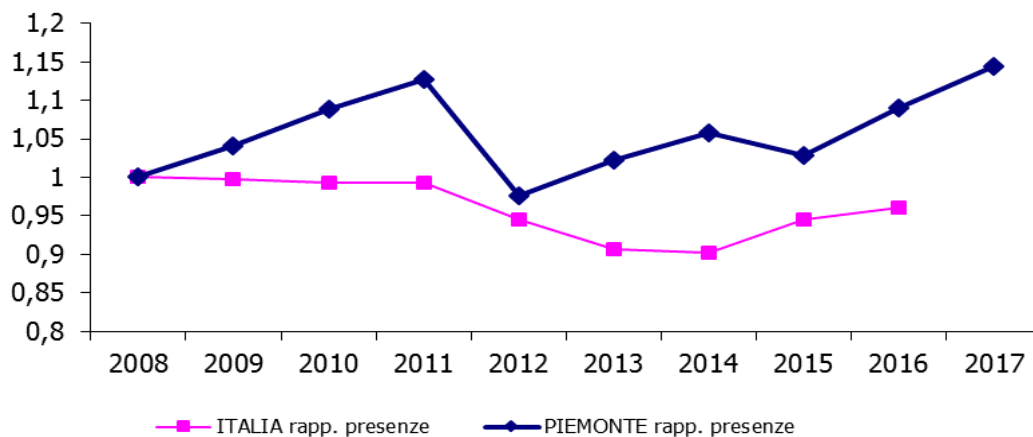
**Presenze 2017 per tipologie di strutture ricettive  
Principali Paesi di provenienza - oltre 85% del totale presenze**



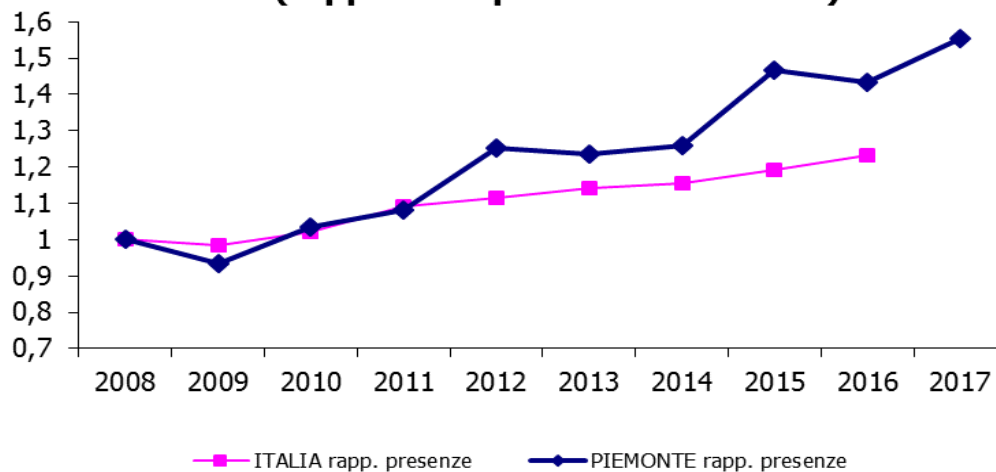
Tipologia struttura	Germania	Francia	Svizzera	Paesi Bassi	Regno Unito	USA	Belgio	Italia	TOTALE
Albergo 1 e 2 stelle	20.474	29.897	13.123	3.743	19.387	2.727	3.051	372.117	464.519
Albergo 3 stelle	322.644	225.684	120.136	44.439	129.820	32.061	34.562	2.559.093	3.468.439
Albergo 4, 5 e 5 stelle lusso	285.707	281.578	175.494	56.355	239.575	136.797	70.021	2.165.747	3.411.274
Albergo Residenziale	42.129	39.966	15.726	13.481	76.309	2.624	3.913	412.049	606.197
Agriturismo	46.804	22.332	48.691	20.335	7.495	11.167	14.170	186.359	357.353
Bed & Breakfast	32.063	21.654	17.355	11.090	5.231	4.076	6.154	152.495	250.118
Campeggio	449.930	47.651	113.646	298.696	18.681	618	22.204	699.326	1.650.752
Altro Extra-Alberghiero	317.227	87.023	136.688	161.570	37.187	24.334	25.269	2.004.004	2.793.302
<b>TOTALE</b>	<b>1.516.978</b>	<b>755.785</b>	<b>640.859</b>	<b>609.709</b>	<b>533.685</b>	<b>214.404</b>	<b>179.344</b>	<b>8.551.190</b>	<b>13.001.954</b>

## Il Piemonte rispetto al totale Italia

### Presenze turisti italiani (rapporto rispetto all'anno 2008)

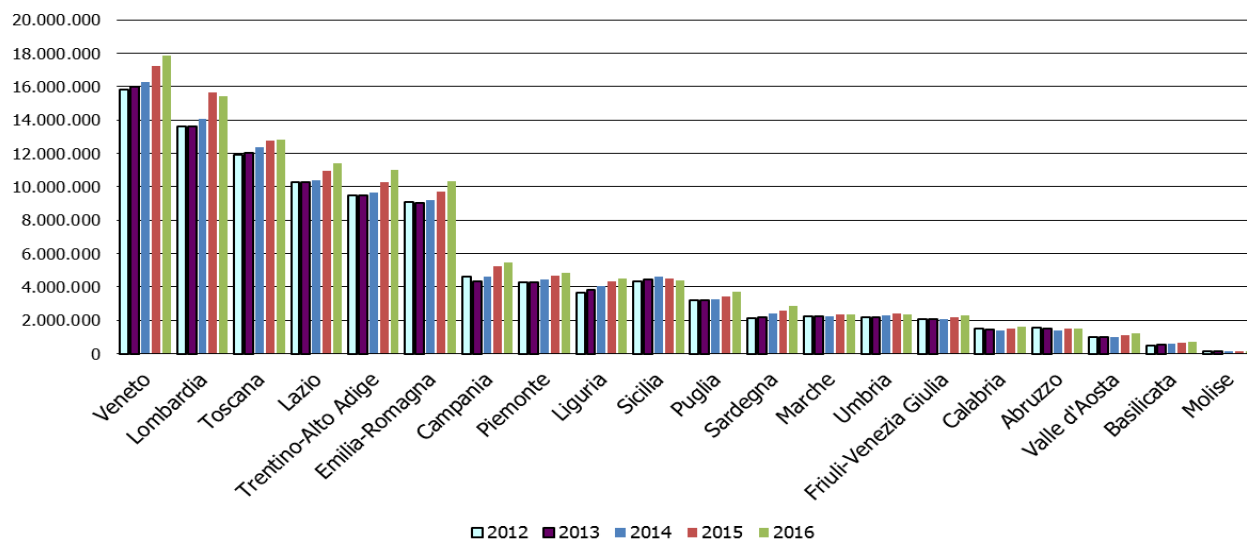


### Presenze turisti stranieri (rapporto rispetto all'anno 2008)



## Il Piemonte rispetto alle altre regioni italiane

Arrivi



Presenze

